

Nu'oli March 2011

Christ Church Episcopal
 PO Box 545
 Kealahou HI 96750
 Phone: 808-323-3429
 Fax: 808-323-2752
 admin@christchurchkona.com
 www.christchurchkona.com

Aloha Bluegrass Academy Coming to Christ Church March 15-18

The Aloha Bluegrass Academy is a one of a kind experience for your child to be exposed to bluegrass, old-time, Hawaiian, and folk music. It is a well rounded camp, in that we teach everything from individual instruments (beginning through advanced), to dance, singing, jamming, songwriting, and performing. Children gain a love for traditional music that will last them their entire lifetime.

Aloha Bluegrass Academy is a 4 day camp, for children ages 8-16, organized by Kate Hamre, and taught by highly experienced teachers from the bluegrass and folk community. Bluegrass Camps for Kids has taught thousands of kids worldwide, including over 80 locations in the U.S., Canada, and Ireland. Ms. Hamre has B.S. in Elementary Education from University of Idaho, and

has hired a dedicated staff of teachers that are well rehearsed in all aspects of teaching music. We have a very well thought out curriculum, as well as tried and true instruction methods and classroom management skills, honed by years of teaching children, in the general classroom, private lessons, and music camps.

Children pick from a wide range of classes; all levels of guitar, bass, banjo, fiddle, ukulele songwriting, jamming, dance, and vocals are offered. Campers are also involved in a band class with their peers, daily jams, square dances, open mics, art projects, optional private lessons, and games, as well as an end of camp concert for their friends and family. Campers do not need to have any previous instruction, as Bluegrass Camps for Kids

teaches beginners up to advanced levels.

Tuition is \$250. *Early Birds get a \$15 discount if you register by March 4! (Scholarship assistance is available—contact Fr. Dick)*

You can help: By loaning your instrument for 4 days? By providing healthy snacks for 1 day?

By volunteering to help with cleanup after camp.

By donating funds for scholarships.

By spreading the word about the Aloha Bluegrass Academy!

See the website for more details:

www.bluegrasscampsforkids.com

- > BLUEGRASS ACADEMY
- > Social Justice and where we are now
- > Bobby Burns Review
- > Marsha Salomon
- > Lorraine Sohm—address

Rector's Column Rector's Reflection for March, 2011



"Let your light shine before men in such a way that they may see your good works, and glorify your Father who is in heaven"

By the time you read these words, the season of Lent will be upon us. For many of us, this suggests a darker time

of the year, a time of fasting and sacrifice. Certainly we ought to approach the season with reverence and discipline, and we do. This is a time when we refrain from shouting *alleluia* during our worship. During this holy season, we are called to a more intentional habit of prayer and study. All this is appropriate. These

habits, taken up in a spirit of devotion, reflection, and thanksgiving nourish our souls, as we seek better to appreciate our Lord's 40-day sojourn in the wilderness.

However, this is clearly not a time in which we must throw ourselves into six weeks of mournful deprivation. If anything,

Inside this issue:

Senior Warden	2
Social Justice	3
ECW News	4
Bobby Burns Review	4
Far and Away	7
Cursillo/Ultreya	9
Birthdays	10



Senior Warden

Senior Warden's Column

I want to start this pre Lenten article with what is really on my mind when I think of the things that are going on at Christ Church right now...I rejoice! We have a hard working, capable, pastoral, listening priest with a good sense of humor. I look forward to his sermon each Sunday. We have a lovely, energetic parish secretary again in the office in the mornings, and she appears to be a fast learner, with a beautiful smile! Now your phone calls, and those from people wanting to rent the hall, will actually be answered by a living person! We have a good, working vestry. We have a warm and welcoming congregation, and we know

how to have fun together—witness last Saturday's successful Game Day in the Queen Emma Center! Our thanks to those who worked so hard on this—Dale, Glenda, Beryl and Marilee!

I am looking forward to the challenging Lenten book, *A New Kind of Christianity*, by Brian McLaren, and to the discussions it will spark (have you picked up your copy yet from Fr. Dick—only \$10?). I rejoice...

You should be seeing some changes in the kitchen required for certification, and even some progress on the rectory slab before long, and believe me, I DO rejoice about that!

Several of us are planning to provide a small snack for the students who gather around the Queen Emma Center on Wednesday afternoon. Anyone want to join us by making cookies or popcorn as we make these visitors welcome? When you read Diane Aoki's article in this Nu'oli, you will realize that we want to know more about you by surveying the way our church members interact with our community at large and what types of social outreach our congregation is doing. I think we will be pleasantly surprised and challenged by the results of this to increase our commitment to service and social justice.

Let's rejoice together.
Charlotte

Lenten Study
A New Kind of Christianity
by Brian McLaren

Event News and Up Coming Activities

March 8th, 6:00 PM – Mardi Gras Dinner and Party

Cajun dinner - Jambalaya and all the trimmings plus The famous Bread Pudding
Costume parade for Adults and kids with prizes for the best
Line dancing by Dana
Donations encouraged at the Calabash



March 11th, 6:00PM – Medieval Feast and Concert

Authentic Medieval meal with Roast Beef and crisps etc etc
Medieval Music featuring Annette Bauer, renowned and professional recorder artist joined by local musicians
Tickets \$40.00/person by calling 323-3429 -or- purchase online at www.earlymusicshawaii.com by clicking on "Add to Cart"

Reservations limited to the first 100 people.

May 21st, 12:00 Noon – High Tea with entertainment

Enjoy traditional High Tea at the Queen Emma Community Center
Tickets \$35.00/person by calling 323-3429

For any questions about these events Call Beryl at 328-7345 to 650-5700



Social Justice for All

Last November (was it?), I wrote an article for the Nu'oli wondering about what it means to be a social justice Christian. What I realized was that even though we may not want to label ourselves social justice Christians, we do walk this walk in many ways. I have a daughter who is decidedly non-religious, but has a heart for all sorts of human dilemmas, especially homelessness. She regularly volunteers at homeless shelters or soup kitchens in Los Angeles. When she was here for the holidays, she asked if we could feed the hungry somewhere. She had looked online for such opportunities and could not easily find a place. I knew that Butch and Reiko Ford were involved in that ministry, so I asked them if we could join them. And one day, we did.

It was an eye-opening and satisfying experience. This is an obvious example of Christ Church congregants involved in a social justice ministry, feeding the hungry. I know the Episcopal Church Workers (ECW) also donate food to the food basket at St. Michael's regularly. I had the thought that it would be interesting to compile a directory of our members and our activities as an organization to illustrate how it is that we walk the walk as social justice Christians. The purpose for putting this together would NOT be strut our stuff and be prideful of how "Christian" we are; the purpose would be to provide each other with

information on opportunities to serve in our community, and contact information for these opportunities. I envision a webpage and a hard copy directory, titled Community Outreach: Opportunities to Volunteer in Kona. (I would like social justice, but I have a feeling it would confuse people). It would perhaps be organized by the different kinds of activities, such as feeding the hungry, clothing the needy, housing the homeless, caring for the children, protecting the vulnerable, stewardship for the land and sea, and then the organizations within each section, with contact information of how to get involved. Send me an email, or drop me a note, if you are involved in a "social justice" activity in the community in which volunteers are welcome and needed. Send me the name and description of the organization, the nature of the volunteer work, and the contact person for volunteers. Are you willing to be the Christ Church contact? I will see what I can do with what I get. If you are still confused about what "Social Justice" means, please communicate that with me as well. Getting a dialogue going is also a good thing. Diane Aoki, ddkaoki@me.com ; P.O. Box 991, Kealahou, HI 96750.

Continued from page 1

A special workshop for adult musicians will be held the evening of March 16. Contact Fr. Dick or see the website above for details!

we ought to embrace with joy the invitation to walk a bit more closely in the footsteps of Jesus. As we study and pray, this is a time when we can begin to understand a bit more clearly our individual and corporate vocations as Christians.

Some members of our parish will choose to follow personal and family tradition as you approach Lent. These habits of individual piety have served you well over the years, and there's no reason to set them aside. For others, who are either dissatisfied with past practice or who have never seriously taken up any form of Lenten devotion, I'd like to offer a few suggestions. Some will work fine for individuals; others are best practiced in small groups.

Daily Prayer *The Book of Common Prayer* is a great place to start! The "Daily Devotions for Families and Individuals" begins on page 136. There are brief, simple services for morning, noon, early evening, and close of day. They follow the pattern of the *Daily Office*, but in an abbreviated form. You can use one or all of the forms, as you wish.

We also have copies of *Good Lord, Deliver Us* a devotional book based on the *Great Litany*, which we traditionally chant on the first Sunday of Lent (10 AM Service March 13). This little book offers daily reflections on each section of this beautiful piece of our liturgical heritage. The *Litany* itself was the first liturgical text published in English (in 1544 by Thomas Cranmer).

The Psalms This collection of 150 songs of praise, lament, and thanksgiving form the core of our faith. They are at once challenging, comforting, and transformative. They challenge us to confront our fears and biases. They comfort us in times of stress, and they transform our understanding of and relationship with our God. The *Psalter* begins on page 580 of the Prayer Book, and even has a 30-day reading plan built in, for those who need a little extra structure!

Midweek Eucharist Our little Wednesday evening congregation is growing, but there is plenty of room for more. The evening service is a bit less formal than our Sunday worship. The homily is brief and usually given extemporaneously. Beginning March 10, we will open the church a bit earlier for quiet meditation prior to the service. Representations of the *Stations of the Cross* will be displayed along the sides of the Nave for those who wish to observe this devotion.

Reading Group I've selected Brian McLaren's *A New Kind of Christianity* for our Lenten reading group. McLaren is among the leaders of the *Emerging Church* Movement. A former pastor, he has written a number of books which seek to find ways in which Christians can practice our faith in a manner that is at once true to the traditions we love while acknowledging our place in a new century. McLaren's writing is challenging, yet accessible; his theology is modern, yet respectful of the past. In *A New Kind of Christianity*, McLaren poses ten questions

for readers who wish to become more faithful disciples of Christ. The questions are at times a bit unsettling: *Is God Violent? What do we do about the Church? Who is Jesus and why is he important?* But they are questions many of us have asked: *What is the Gospel? Can we find a way to address human sexuality without fighting about it? How can followers of Jesus relate to people of other religions?*

The group will meet on Sundays during lent from 9:00 to 9:45 in the Queen Emma Center. For those who prefer a mid-week group, Ken and Barbara Pool have offered to host and lead an additional grouping at their home.

These are by no means the only ways in which we can observe Lent. Any practice that causes us to draw nearer to our Lord, to reflect on His life and teaching, and to better walk in the footsteps of the saints is appropriate. We need not *give up* anything, but if a bit of self-denial helps, that's OK too! However you choose to observe it, may your Lent be a blessed one!

In Faith,

Father Dick

One more thing: A special thanks to our editors: Kela Luczon has graciously (and bravely!) volunteered to team with Betty O'Brien to compile and edit the Nu'oli. Mahalo Kela for stepping up. Mahalo Betty for hanging in there to get the news out!

Your Pledge

Your pledge is essential to keeping our doors open. Each year, we depend on the commitment of our members when we plan the activities of the parish. In order to put our programs in place, it is important that we forecast, as accurately as possible, our income from various sources. Although we are blessed to have several endowment funds generating income, and receive a significant portion of our income from rents, your pledges comprise the foundation of our budget.

This year, we took a very soft-spoken approach to gathering our pledges. As a result, approximately half of our regular contributors completed and signed their pledge cards, and we are most thankful for your commitment. Others may not have heard the call. Our current pledges represent only about half of the amount we are projected to need in order to balance the budget. *It's not too late!* Actually, by now many of us have a more clear picture of our personal finances for the coming year, and can

therefore be more confident in our ability to honor our pledges. Remember, it isn't the size of the pledge that is most important. What is critical is that we are able to project our income as it relates to our expenses. It's just part of being good stewards. Please see Meg Greenwell or Betty O'Brien if you have misplaced your original pledge card. Mahalo

The Stewardship Committee

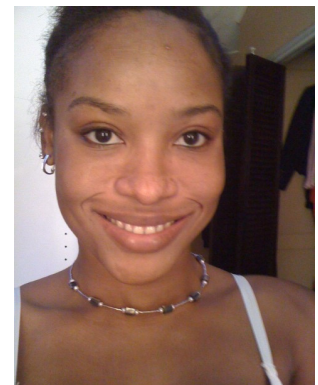
Your
Pledge
keeps
the
doors
open

New Face in the Office

At the end of the year, the Wardens, Rector and Vestry agreed: we needed a reliable, personable, competent assistant in the church office. One newspaper ad, thirty inquiries, seventeen resumes and five interviews later, we found

her! After only a few days, it is clear that *Marsha Salomon is a great fit for Christ Church*. Born in Jamaica, raised in Arizona, settled in Kona, Marsha brings experience, enthusiasm and a wonderful sense of joy to our parish. She will

be on duty every weekday from 9 to noon, ready to answer phones, relay messages, and attend to many of the chores that, for months, have fallen to a host of wonderful (dare I say *saintly*) volunteers. We are delighted to have Marsha with us!



Marsha Salomon



ECW News

The women of Christ Church ECW met at the Queen Emma Community Center (QECC) on Tuesday February 8th. It was voted to give one scholarship for a child to attend the Blue Grass Academy on March 15-18, 2011.

April 9th will be a Rummage Sale and Car Wash to benefit the ECW's outreach. We can not accept donations until after the Medieval Feast.

The next meeting will be March 8th at 10am in the QECC all are welcome.

Beryl Spalding
President.

Robert Burns Night Review

There are at least two occasions during the year when Scots and their supporters gather to hoist a dram of good spirits and enjoy Haggis; one, during Highland Games week and the other, to celebrate poet Robert Burns. To toss the caber and join as a competitor or observer of competition in traditional Scottish events, you can of course travel to Kapiolani Park on Oahu for a two day sample on the first weekend of April. The full experience can be enjoyed only with the entire week event which can be found by journeying to the North 48. Please be aware that a caber is a small telephone pole and the jousting swords are heavy. A much better choice is a Bobby Burns night celebration, and although he was born on 25 January 1759 any night will do as long as it is done up correctly.

Lawton Allenby suggested and chaired just such an evening on 9 February in our Queen Emma Community Center Hall. Lawton correctly predicted that a poetry reading and pot luck meal would be a big draw with appropriately sequenced poems to open, introduce the feast, and close the robust evening. Beryl baked a 3 pound meat loaf in lieu of haggis. A piper piped the meatloaf into the festival hall. Andy read an ode to the haggis and appropriately stabbed the meat loaf with a dagger. The lucky celebrants not only reveled in some fine food, they also selected and read passages from Scotland's favorite (and world renowned) poet. During the evening, the piper played Amazing Grace and Auld Lang Syne, both of which were heartily sung by all. The turn out, including three teenagers, was large enough and entertained enough that the calabash donations actually raised some much needed funds for our parish, for which we give grateful thanks. Everyone thought we should have another Bobby Burns night and we hope Lawton will chair it again. We hope the turn out next time will be large enough to require reservations. The challenge to future celebrants will be; are they brave enough to partake in real haggis?

If any member of the congregation has an idea for a cultural evening which will enrich the lives of our flock, please contact the office with a proposal. Prospective party planners would do well to contact Lawton and request a work list of all the preparations and contributions he made which created this over the top celebration.

CHRIST CHURCH PRAYER LIST

Your continued prayers are asked for these people:

Andy, Betty Dunford, Connie Zahalka, Mailani Thompson, Irene McCullough, Odette Issac, Steve Warren, Aunt Kay, and Pam VanWechel.



We are a praying community, which means that, not only do we believe in the power of prayer on a personal level; but that we also believe that we are called to offer our petitions and thanksgivings on behalf of others. We believe that God hears and responds to all of our prayers, individual and corporate. Every prayer is to God a love poem from a dear child. Like any loving parent, our God rejoices in the faith that underlies our prayer.

Our Christ Church prayer list is offered as but one way to respond to the many and varied concerns of our members and our friends. In an effort to keep this essential part of our prayer life current and relevant, we will be updating the list weekly, and have determined that each month we will start a new list. If you wish to keep a name on the list for an extended period, please contact the office *every month* to let us know.

March 8

Mardi Gras

at the Queen

Emma

Community

Center

At 6pm

Dress in

costume

Plan on

Eating New

Orleans style

Flowers Request Form

Christ Church Episcopal
Altar Flowers - 2011

To order your Flowers to decorate the Altar please fill out this order form and make your check payable to
Hawaii Floral Express

Name: _____

Date of Sunday service _____

Arrangement: Price **\$35 or \$50 for 2 matching arrangements**

Amount enclosed: _____

Dedication _____

This order can be mailed to the church office, placed in the collection plate, phoned in or delivered to the office. The office staff will call in the order and mail your check when the charge is received.

Far and Away Stories

Dear Friends:

I thank you all for the warm memorable Aloha I received on my last Sunday at Christ Church. I'm adjusting to the weather, aching for some Kona sun. Have bonded with two beautiful whippets, that have accepted me into the family. All in all doing

well. Hope to hear from some of you once in awhile as I do miss you all. Peace and Gods blessings - Aloha, Lorraine

756 Paige Lane, Thousand Oaks, CA 91360
805-557-4543

email: lorraine.sohm@gmail.com



**March 11
Medieval Feast &
Music at the
Queen Emma
Community Center
6pm
\$40.00 pp
reservations
required see Beryl
or Garrett**

Church Mouse




Mychilo Cline (son of Nancee and Stephen) is on his way to Moscow to teach in the international school for the spring semester. He will be there on a diplomatic visa.

Father Dick has been able to enlist the aide of 5 time Grammy winner Keoki Kahumoku for the Aloha Bluegrass Academy. Way to go Father Dick. Should be a great event.

Bill & Linda Melson will be enjoying a visit from their daughter Kelli from England. She'll be here from April 9th until May 5th.



March 2011

Sun	Mon	Tue	Wed	Thu	Fri	Sat
		1	2 10a Life Care Center 6p Evening Worship	3	4	5 Sat Nite Live Wallace Hall All Saturdays 6:30
6 Breakfast 9a church	7 EFM	8 ECW 10a Mardi Gras 6p 	9 ASH Wednesday 10a Life Care Center 6p Evening Worship	10	11 Medieval Feast 	12
13 Vestry Cursillo Ultreya 	14 EFM	15	16 10a Life Care Center 6p Evening Worship	17	18	19
20	21 EFM	22	23 10a Life Care Center 6p Evening Worship	24	25	26
27 Taize Service 6p	28 EFM	29	30 10a Life Care Center 6p Evening Worship	31	1 APRIL	2
3	4	5	6 10a Life Care Center 6p Evening Worship	7	8	9 Rummage Sale Car Wash



UP COMING EVENTS

- Sunday March 6** 9am Breakfast and Church in Historic Church
- Tuesday March 8** 10am ECW, all are welcome
- Tuesday March 8** 6pm Mardi Gras, Queen Emma Community Center
- Friday March 11** 6pm Medieval Feast & Music, Queen Emma Community Center
- Sunday March 27** 6pm Taize Service
- Saturday April 9** all day Rummage Sale and Car Wash
- Saturday May 21** Noon Spring Tea, Queen Emma Community Center

Cursillo and Ultreya Events

Cursillo is having it's annual spiritual weekend on May 12-15. Cursillo is a weekend of peace, renewal, and unconditional love for God's people. This year the Rector for the weekend will be none other than our own special Bill Melson. If this is something you have heard about and thought gosh, that would be a great time to feel closer to my Lord again, talk to Bill or Linda Melson or any of the other Cursillistas in our congregation. It is a wonderful way to feel God's love at work in your life and those of others.

Ultreya is always held the 3rd Sunday of every month and we will have a schedule of locations for you next month. It is the 4th day of Cursillo and a great reawakening of the Spirit that you felt at Cursillo. Again See Bill or Linda Melson or one of the other Curillistas.

Cursillo

May 12 to 15

Don't miss out.

Live the

Spirit within

with a Spirit

filled weekend

retreat

Big Island Cursillo Ultreya Schedule for 2011

January 16	Christ Church, Kealahou
February 20	Christ Lutheran, Hilo
March 20	St. Augustine, Kohala
April 17	Ocean View (location to be determined)
May 12-15	CURSILLO WEEKEND #32 at Makapala, Kohala, Hawaii!
June 19	THANKSGIVING ULTREYA (location to be determined)
July 17	Christ Church, Kealahou
August 21	Imiola Church, Waimea
September 18	Holy Apostles, Hilo
October 16	Christ Church, Kealahou
November 20	Christ Lutheran, Hilo
December 18	Sandy's Hale, Ocean View

Ultreyas are held on the third Sunday of each month between 2:30 and 4:30 p.m. Bring songbooks, musical instruments, vocal chords (mandatory), something ono to eat and share with everyone and lots of JOY!



March Birthdays

Brenda Kikuchi	5
Betty Hodgins	7
Kim Killino	15
Joan Coupe	18
Ken Kjer	18
Shawn Nakoa	25
Carolyn Machado	25
Sally Inkster	31



Birthday Lists
Is your name missing? If
so, we don't have your
birth date in our
records

NU'OLI

March 2011
Betty Obrien & Kela Luczon
Nancee Cline & Charlotte Melrose,
Contributing Editors
Nu'oli is published monthly by
Christ Church Episcopal
PO Box 545, Kealahou, HI 96750
Copyright © 2011

Christ Church Episcopal
PO Box 545
Kealahou HI 96750