

Newly constructed in January 2005 at a cost of \$1.4 million, Christ Church Community Center offers a spacious and welcoming setting for business meetings, seminars, and workshops as well as weddings, anniversary parties & celebrations of all kinds. The space can be used as one large room, or divided into three separate areas by folding doors, and at 2000 square feet and a capacity of 216 people, there is plenty of room for large gatherings or several small groups.

The facility features a professional grade kitchen available for staging and serving catered food, two 50" flat screen televisions linked to VCR, DVD or to a laptop for a PowerPoint presentation, and a movable stage for a speaker or a band. The walls on the south end of the building fold open onto a beautifully landscaped meditation labyrinth and lanai area providing even more space and taking advantage of the cool ocean breezes.

The entire facility is handicapped accessible, and other amenities include: ample parking, comfortably upholstered folding chairs, folding banquet tables, and spacious restrooms.

The Community Center At Christ Church

The Community Center is easy to reach, located in the cool elevation of Kealakekua, just 8 miles from Kailua—away from the traffic and crowds.

Available all year round—it is the perfect place for:

- **Seminars & workshops**
 - **Business & social meetings**
 - **Weddings & anniversaries**
 - **Musical concerts**
 - **Holiday parties**
- Celebrations and events of all kinds!**

Community Center at Christ Church Episcopal

Highway 11 at Konawaena School Rd.

P. O. Box 545

Kealakekua, HI 96750

Office Phone: 323-3429

Office Fax: 323-2752

Email: admin@christchurchkona.com

www.christchurchkona.com

The Community Center At Christ Church



**Konawaena
School Road at
Highway 11
Kealakekua
323-3429**

Rest rooms

Church office

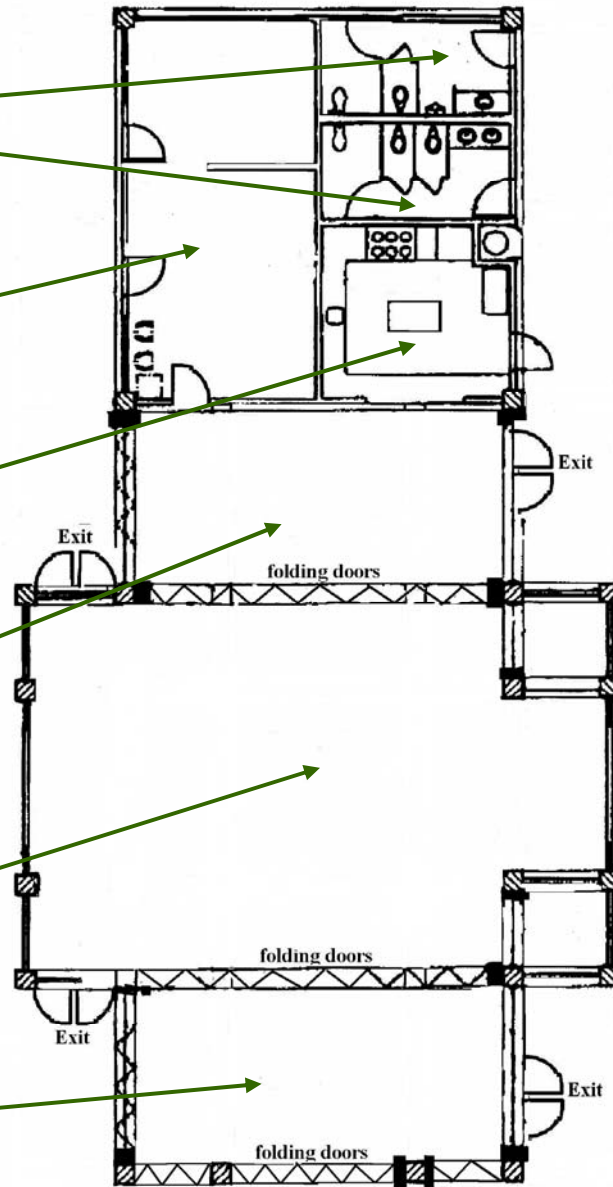
Kitchen

North wing

Main wing

South wing

Labyrinth



Facility	Size	Capacity
Main Wing	1,000 sq. ft.	149
North Wing	500 sq. ft.	33
South Wing	500 sq. ft.	34

- Wings are separated by folding doors and can be used as separate break out rooms, or the entire hall can be used as one space.
- A moveable stage of 8" or 16" height.
- Two 50" flat screens linked to VCR, DVD or can be linked to your computer for a PowerPoint presentation.
- 6' portable movie screen
- A professional grade kitchen for serving.
- Two handicap accessible restrooms.
- 140 folding chairs with upholstered seats and backs; 12 six foot folding tables; 12 card tables.